

Identification and Quantification of Anthropogenic Pressure in Corridor between Ranthambhore National Park and Kailadevi Wildlife Sanctuary



A Report By:

Ovee Thorat; M. Sc. & Ramjilal Gurjer

Under the guidance of

Mr. Fateh Singh Rathore & Dharmendra Khandal; Ph. D.

Tiger Watch (www.tigerwatch.net)
Ranthambhore Road, Sawai Madhopur, Rajasthan 322 001

Supported By

Tiger Awareness • Prakritik Society • Hotel Dev Vilas

List of Contents

- 1. Introduction**
- 2. Aim of the Study & Methodology**
- 3. Summary of the Data**
- 4. Study Area**
 - a) Placement**
 - b) Habitat**
- 5. Human Presence in the Study Area**
 - a) Ethnic Groups**
 - b) Basic Facilities**
 - c) Agriculture**
 - d) Livestock**
 - e) Sand Mining**
 - f) Infrastructural Development**
- 6. Wildlife**
- 7. Discussion & Recommendations**
- 8. Annexure 1: Socio-economic Datasheet**
- 9. Annexure 2: List of villages in the study area**
- 10. Annexure 3: Socio-economic data of villages in the study area**
- 11. References**

Acknowledgments

This project would not have been possible without the precious supervision and support of Mr. Fateh Singh Rathore and Mr. Dharmendra Khandal. We are grateful towards Mr. Phillip Davis; Tiger Awareness for the financial aid.

We are appreciative of infrastructural facilities provided by Prakritik Society. Mr. Govardhan Singh Ranthore, Mr. Balendu Singh and Mr. Jay Mazoomdar offered us useful suggestions and information. Thakur Shersinghji of Baler also shared his traditional knowledge of Kailadevi Sanctuary. We express gratitude towards all above mentioned individuals for enriching our knowledge.

Mr. Girish Punjabi helped us to prepare grids for the maps of study area. His grids will also be useful for further detailed studies in the area.

Thanks to Babuji for maintaining our accounts. The daily care and food provided by Mogiya Hostel warden kept us ready for work all the time. We could not have done with drivers of Tiger Watch. Most essentially, the support of local people who accompanied us on the field was imperative.



Tiger Awareness



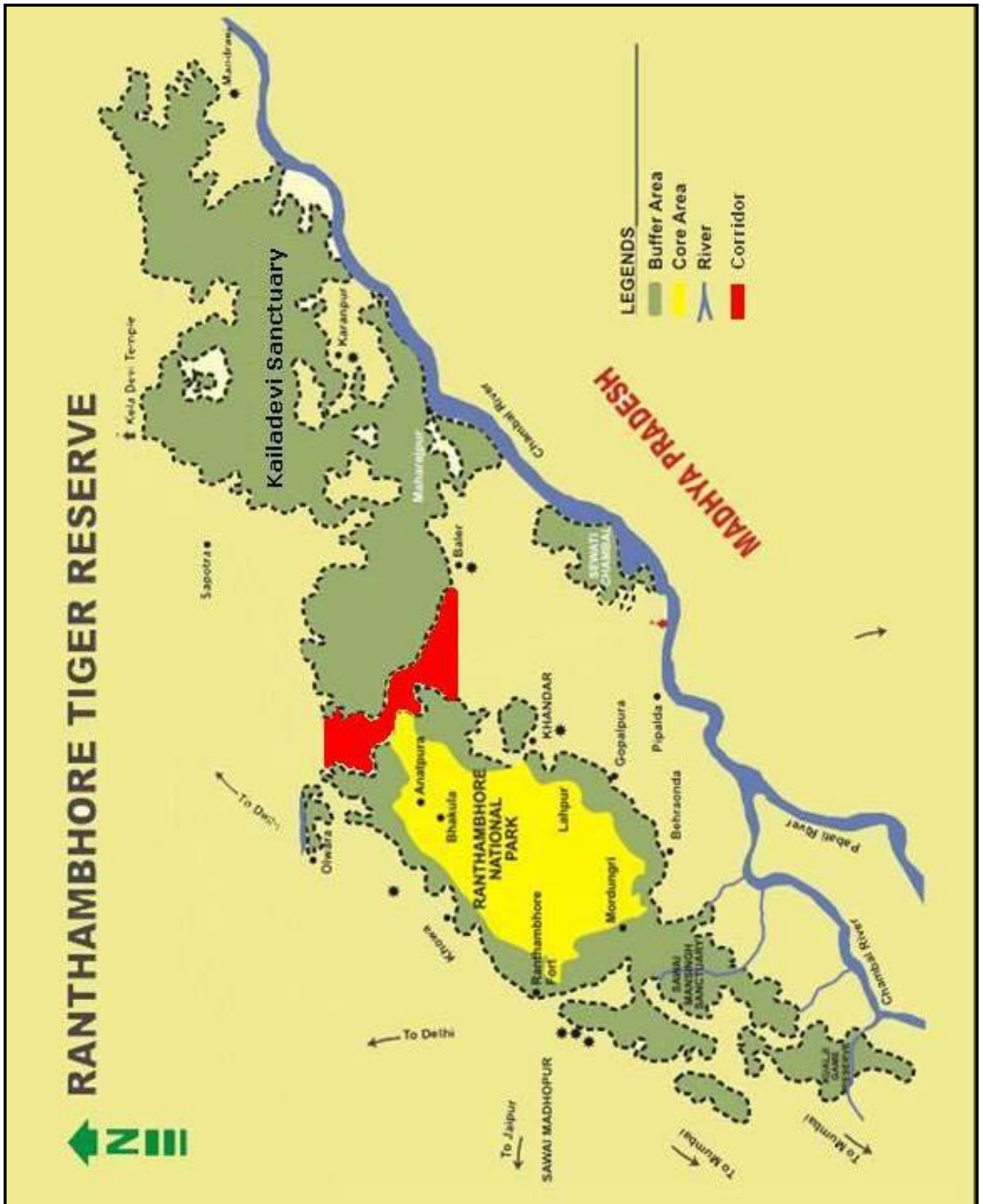
Wildlife movement corridors, also called dispersal corridors or landscape linkages are linear features whose primary wildlife function is to connect at least two significant habitat areas (Beier and Loe 1992). Wildlife corridors are one of the important strategies to increase the connectivity of isolated populations (Meffe and Carroll 1994, Rosenberg et.al 1997). These corridors are areas which connect such populations and lessen the effects of habitat fragmentation. Wildlife populations become disconnected due to various reasons including biological barriers and anthropogenic activities. Isolation of population decreases genetic diversity. Habitat fragmentation affects numerous ecological processes across multiple spatial and temporal scales, including changes in abiotic regimes, shifts in habitat use, altered population dynamics, and changes in species compositions (Schweiger et al. 2000 and Bond, M. 2003.)

In cases where some development may be acceptable, corridors can be incorporated into the design of a development project by conserving an existing landscape linkage or restoring habitat to function as a connection between larger protected areas (Bond, M. 2003). Connecting separate populations increases genetic diversity and also helps re-colonize population in empty habitats. Wildlife corridors are especially more important for species with large range size.

Ranthambhore Tiger Reserve has recently experienced tiger crises due to poaching. Poaching, combined with the fact that Ranthambhore is an isolated habitat, leads to restricted gene pool of tigers within Ranthambhore (Kenney et. al. 1995). Kailadevi Wildlife Sanctuary is a significant part of Ranthambhore Tiger Reserve which is separated from Ranthambhore National Park by river Banas. Kailadevi WLS not only connects to Ranthambhore NP but also can act as a corridor to take tigers to Madhya Pradesh. The Tiger population of Ranthambhore is geographically isolated with 'stepping stone' connectivity through Kaila Devi Sanctuary to Kuno Wildlife Sanctuary in Madhya Pradesh. This connectivity if revived can serve as a means for dispersing tigers to repopulate Kaila Devi as well as Kuno (Y.V.Jhala, R.Gopal, Q.Qureshi, 2007). The corridor between Ranthambhore NP and Kailadevi WLS is also home to some important species of birds, canids and reptiles besides acting as a movement corridor for tigers.

Presence of villages and their developmental activities has made this area fragile. There has been a history of human-animal conflict in this area including a situation where two tiger cubs were poisoned to death by villagers (TNN, 2010). It is essential that anthropogenic pressure in this area is known and assessed for planning conservation of this corridor.

Map 1: Ranthambhore Tiger Reserve



2. a. Aim of the Study

Identification and quantification of anthropogenic pressure within Kailadevi Wildlife Sanctuary

2. b. Methodology

1. Socio-economic Datasheet

A datasheet (annexure 1) for collecting the socio-economic data was created according to nature of villages in our study area. Basic details of GPS location, district, tehsils as well as panchayats and sarpanch were noted at the start. This data was useful to understand exact location of the villages. Data such as water and electricity supply, health facilities, banks, schools etc. gave us idea about the extent of development of the villages.

Census data of 2001 was not available for all of the villages hence human as well as livestock population data was collected from each and every village during this survey. This data informed us about the size of the village. Data related to income sources and firewood collection was important to know the dependence of villagers of forest.

Crop and livestock predation data was used to estimate human-animal conflict and presence of wildlife in the study area.

The data was collected of each village within the sanctuary by one of the authors (**Ramjilal Gurjer**) in the span of three months as a part of project involving Kailadevi WLS. His contribution to this project was most important. Local guides and sometimes another assistant accompanied him during the field survey.

2. Mapping

Google Earth software was used to prepare maps of study area as well as to learn about parameters such as village and agricultural development. We identified important villages to include in our study according to their location on Google Earth. Other GIS softwares (Quantum GIS, GE Path and GE Graph) were also used. Toposheet (Government of India 1977, no. 54 Dhaulpur) of the area was used as a reference to mark boundary of Kailadevi WLS.

3. Summary of major aspects of socio-economic data

Total Villages	22
Total Population	11008
Total Households	1858
Vehicle Data	
Jeeps	3
Motorcycles	119
Tractors	40
Firewood Collection from inside PA	58.86%
Livestock Data	
Buffalo	4615
Cow	2605
Goat	8325
Others (Sheep, camel, horse, pig)	1260

4. Study Area

a. Placement

Ranthambhore Tiger Reserve is situated in south-east Rajasthan. The area of reserve extends between latitude 25⁰54' N to 26⁰12'N and longitude 76⁰23'E to 76⁰39'E (Ranthambhore Tiger Reserve Management Plan, 190-1995). Ranthambhore NP adjoins the forests Kailadevi WLS in the North-east. The total area covered by this sanctuary is 672.82 Km² out of 1394.48 Km² area of Ranthambhore Tiger Reserve (Ranthambhore Management Plan, 1991-1995). Almost all the villages included in study belong to Khandar tehsil in Sawai Madhopur district. Only one village belongs to Sapotra tehsil of Karauli district.

The corridor between Ranthambhore NP and Kailadevi WLS is about 14 km long in the North-South direction. The distance between the two PAs is about 1.5 to 2 Kms long at some places but there are also areas where the distance is about 8 Kms.

River Banas separates Ranthambhore NP and Kailadevi WLS. It originates in the Khamnor Hills of the Aravalli Range and is a tributary of the Chambal River, which in turn flows into the Yamuna, a tributary of the Ganges. The Banas is approximately 512 kilometers in length (Water Resources Department, Government of Rajasthan).

We identified total 22 villages which can be considered to be inside the corridor between Ranthambhore NP and Kailadevi WLS. Out of these, we selected seven villages (Talda, Talda Khet, Bahavpur, Gadin, Bhid, Khidarpur Jadon and Kala Khora) as priority villages due to their position in the study area. These villages are present in the narrowest part of the corridor which is crucial for animal movement.

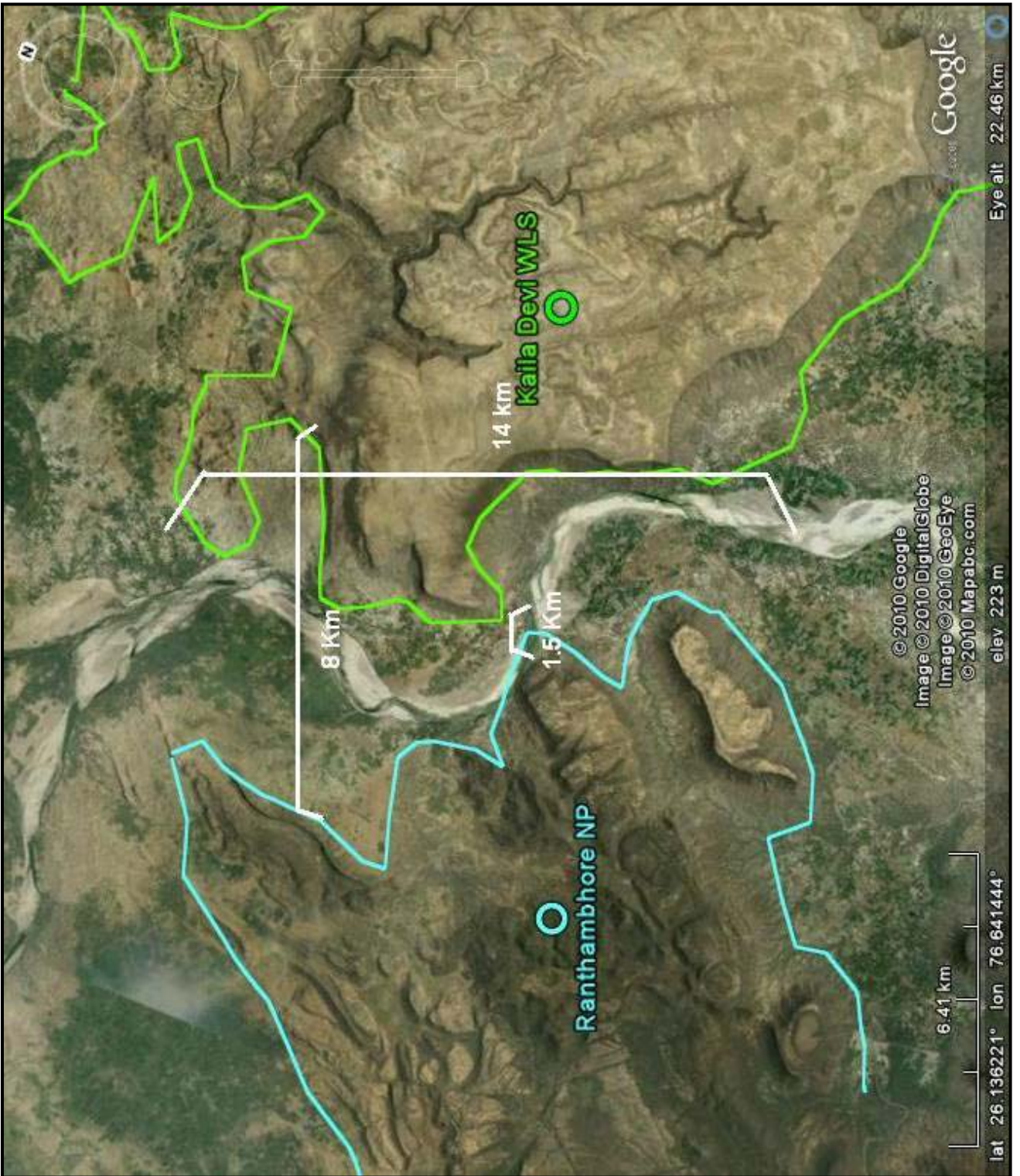
b. Habitat

Tiger Habitat Type of Ranthambhore is Tropical Dry Forest and the TCU level of III (Dinerstein, E.et.al 1997). Level III TCU offers low probability of persistence of tiger populations over the long term due to its small size, isolation from other habitat blocks containing tigers and fragmentation within its respective major habitat type.

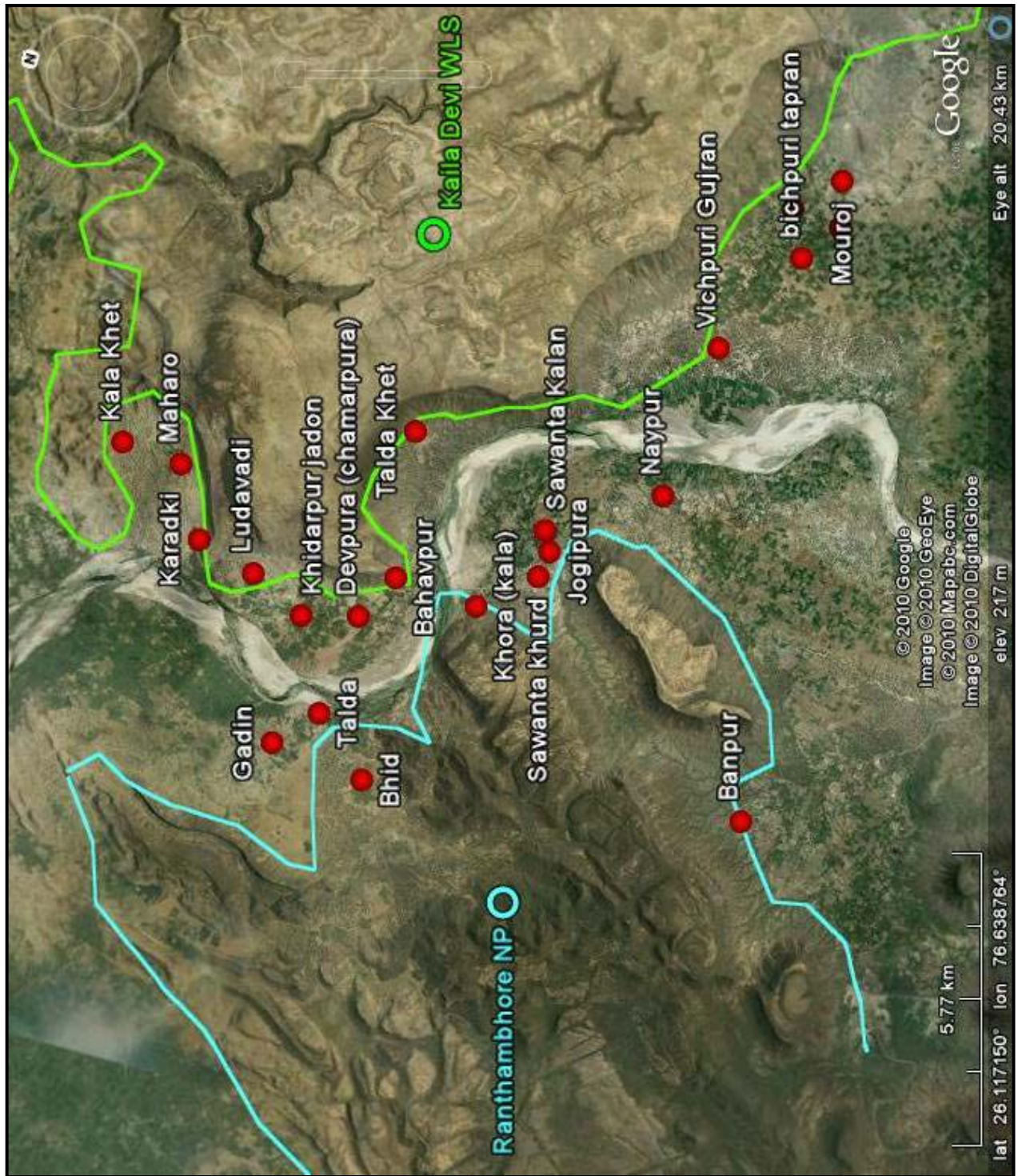
The sanctuary is situated in semi-arid zone of north-western India (Rodger and Panwar 1988). It contains *Dhork* (*Anogeissus pendula*) as the dominant tree species. Ranthambhore TR is the only Tiger Reserve in India to have such a continuous *Dhork* forest.

The habitat in the corridor is mainly composed of **Banas River** and its sandy banks. Some forest cover is also included in the study area. The ravines of this river and its easily crossable bed offer the only remaining biological link with other forest areas for genetic diversity (Ranthambhore Management Plan 1990-1995). The dry river beds and shallow water is the reason due to which wildlife can easily cross it. This river is also a very important source of water for wildlife.

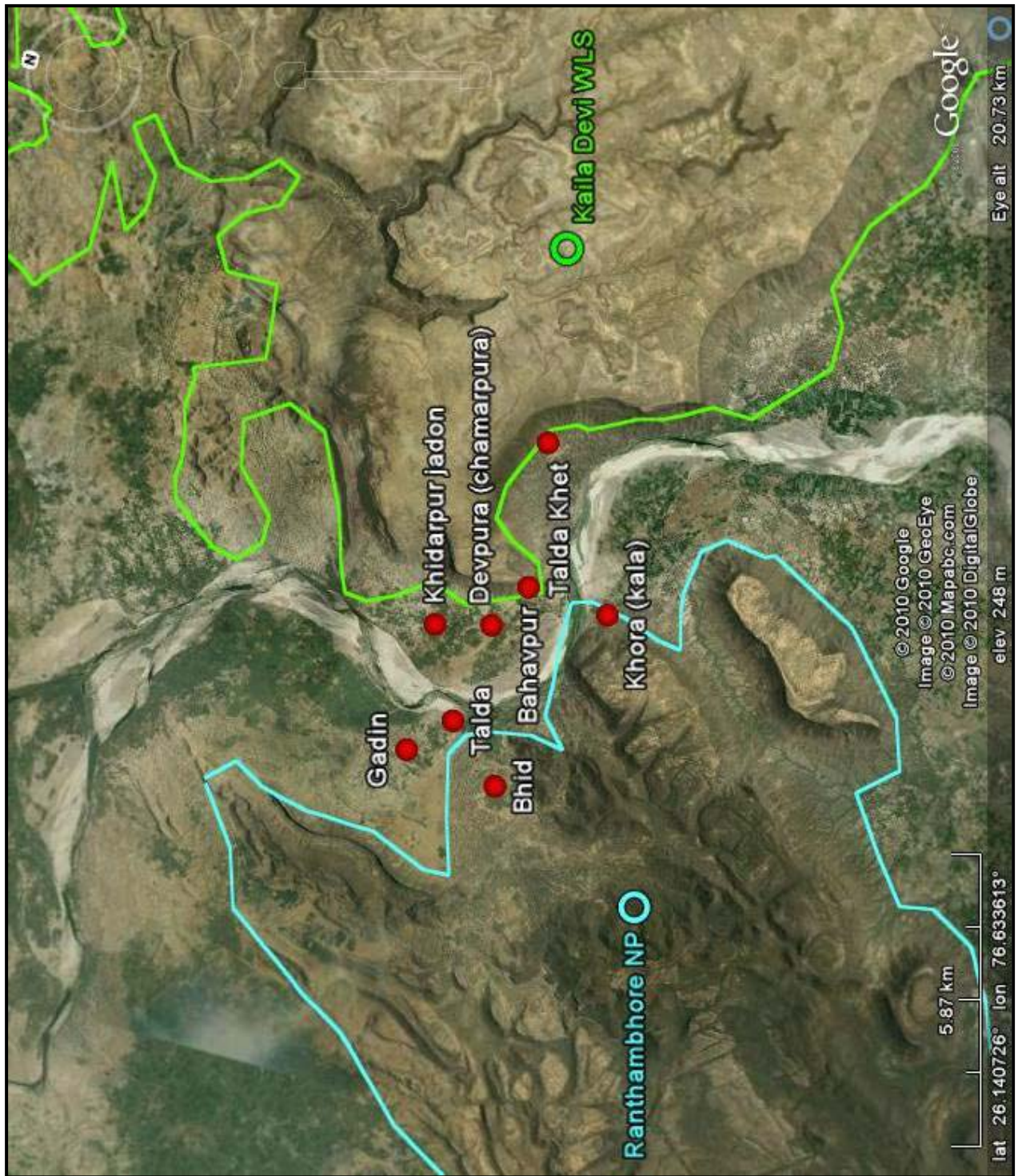
Map 2: Corridor Dimensions



Map 3: Villages in the study area



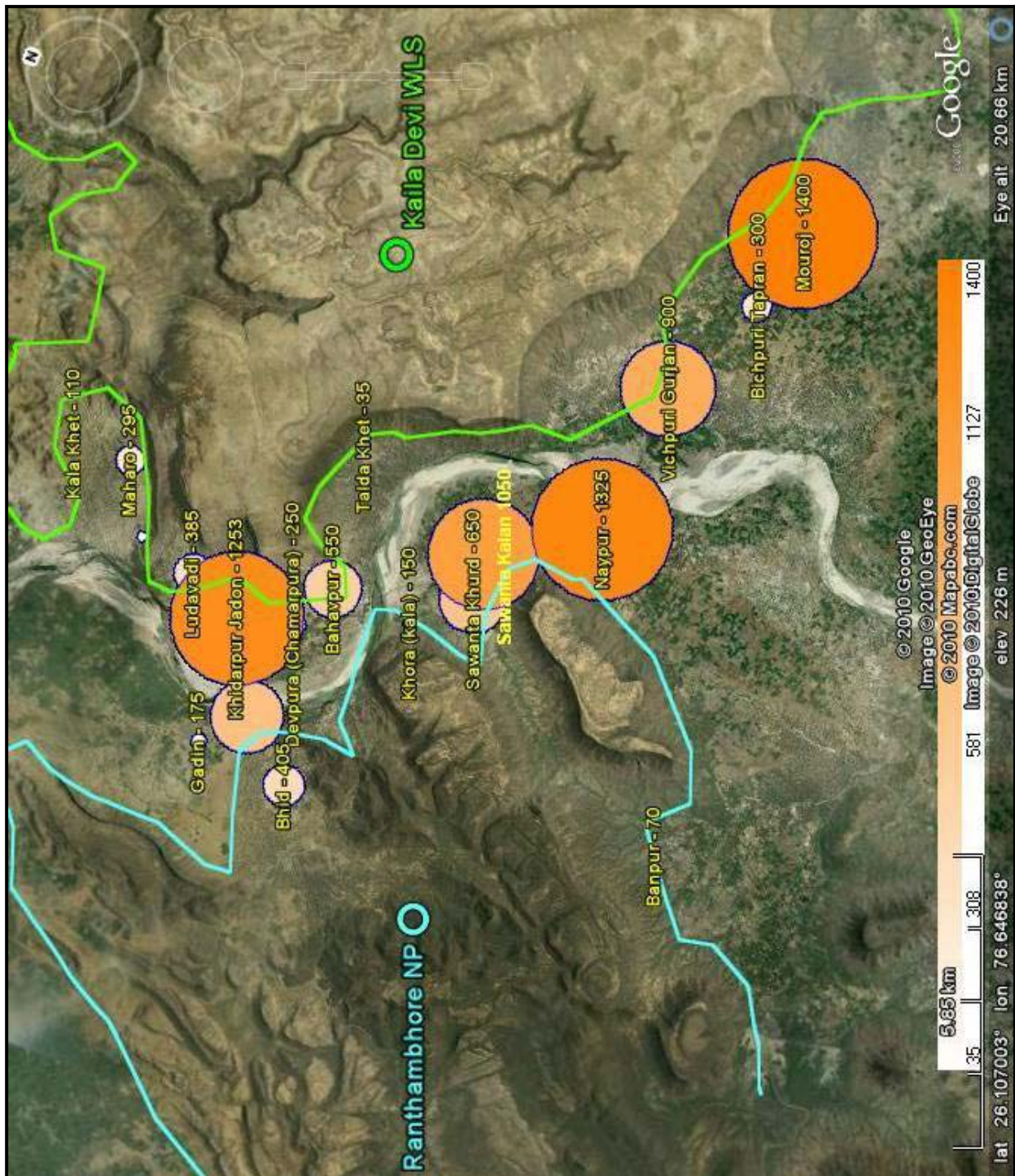
Map 4: Priority Villages



5. Human Presence in the Study Area

We identified total 22 villages which can be considered to be in the corridor between Ranthambhore NP and Kailadevi WLS (annexure 2). The total population living in these villages is 11008 consisting of 1858 households.

Map 5: Human population in villages of the study area



a. Ethnic groups

The people living in this area mainly belong to Gurjer and Bairwa communities. Some other communities including Jat, Prajapt, Brahmin and Keer are also present in small amount.

Gurjers traditionally depend on livestock as the main income source and carry out agriculture to some extent. Bairwas are not dependent on natural resources to such an extent. Their main occupation is working as labourers in mining and construction sites.

Communities such as Gurjer which depend on forest for livelihood are hard to move out. Gurjers need the forest land to graze their cattle. No amount of money can get them good pastures such as in the PAs. Whereas, communities which are traditionally labourers; are willing to move out. Hence, it was important to spot villages according to the type of community. We identified total nine villages which are entirely composed of Gurjer community and three Bairwa villages as listed below-

Table 1: Village List According to Community Conservation

Sr. no.	Gurjer Villages	Bairwa Villages	Mixed Villages
1.	Banpur	Kaladanda	Mouroj
2.	Talda Khet	Piladanda	Vichpuri Gujran
3.	Ludavadi	Bichpuri tapran	Naypur
4.	Gadin		Sawanta Kalan
5.	Karadki		Jogipura
6.	Maharo		Sawanta Khurd
7.	Devpura (Chamarpura)		Khora (Kala)
8.	Kala Khet		Bhavpur
9.			Khidarpur Jadon
10.			Talda
11.			Bhid

b. Basic facilities

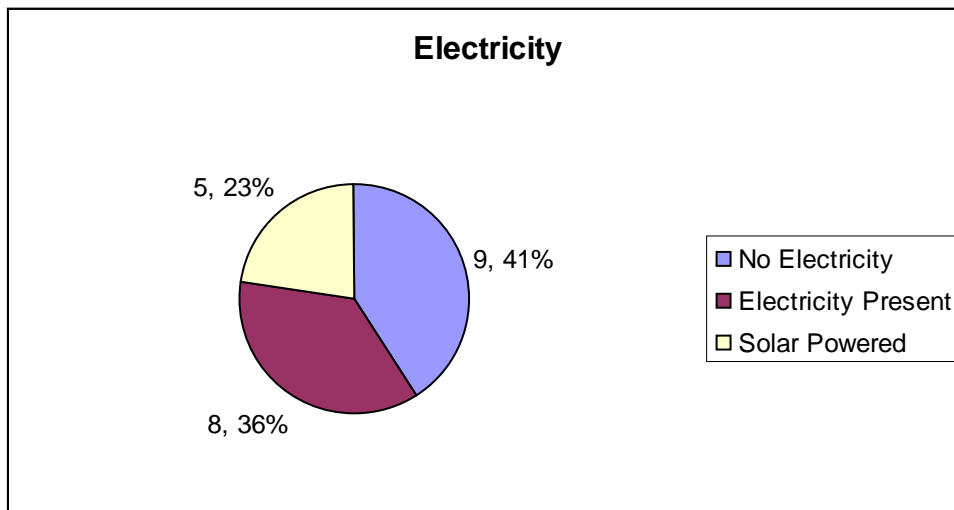
Understanding the availability of basic facilities in the study area provides an idea about extent of development and dependency on forest resources. As a part of socio-economic data we collected information regarding water and electricity supply, education and health care.

Out of 22 villages, two villages have no water supply. Every village has 1-2 working hand pumps on average. Wells and tube wells are used for irrigation. Bans River is an important source of water. Only 36% of the villages have electricity (8 villages). 41% (9 villages) of the villages do not have any electricity at all. However, remaining 5 villages have solar powered lights. (Chart)

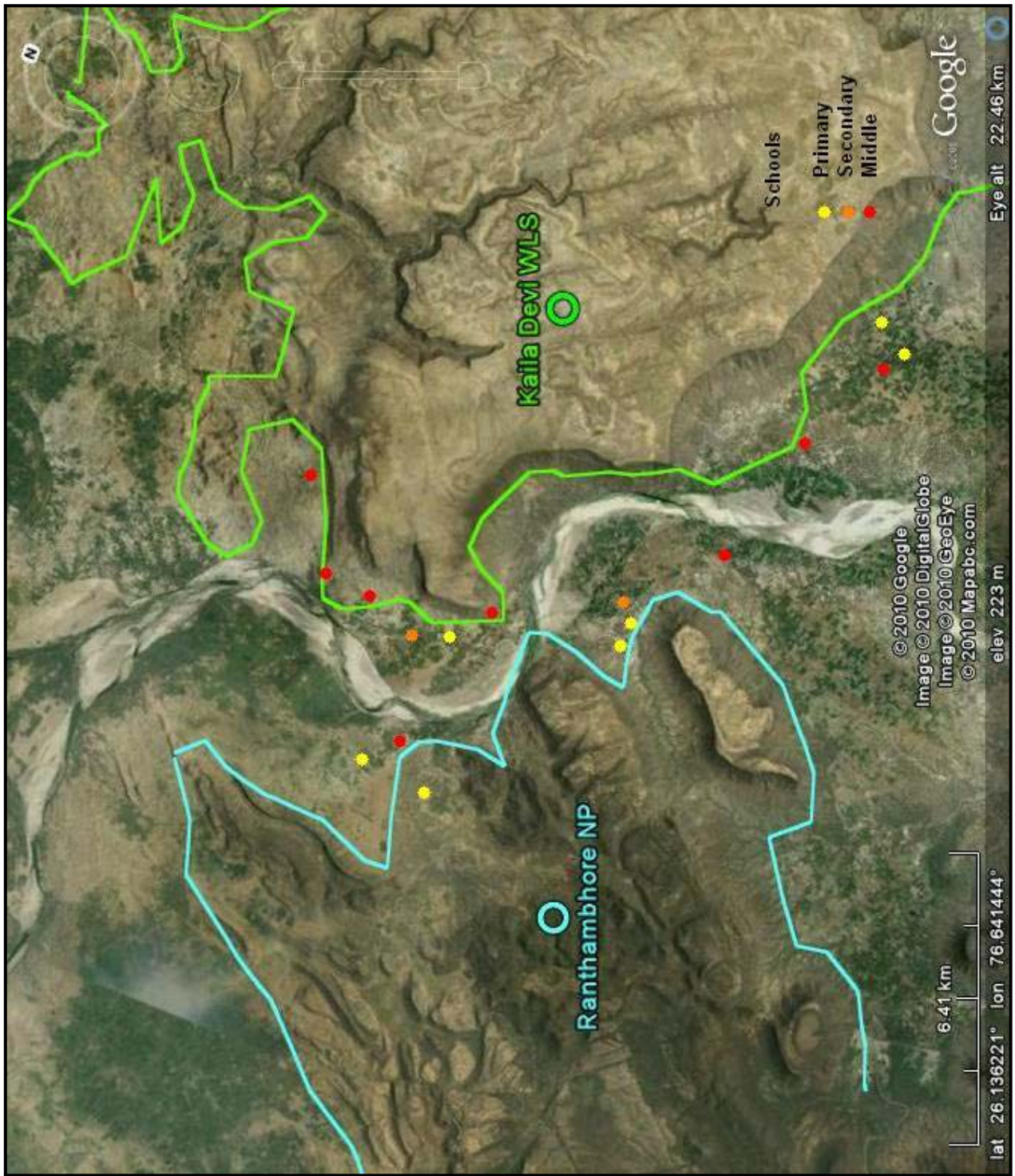
Four villages do not have any schooling facilities. Other villages have at least primary, secondary or middle schools. However, none of the villages have facilities for higher education.

None of the villages have health care facilities.

Chart 1: Electricity Supply



Map 6: Schools in the study area



c. Agriculture

Agriculture is the main income source of about 36% of people. Tube wells and wells are used for irrigation. Banas River is an important water source. Agriculture is carried out along the banks of the river as most of the other region includes steep slopes. At many places ravines are flattened for agriculture.

Wheat and Mustard are the major crops which are harvested from this area. Apart from these, Millet, Chili, Sesame and Pulses are also harvested to some extent.

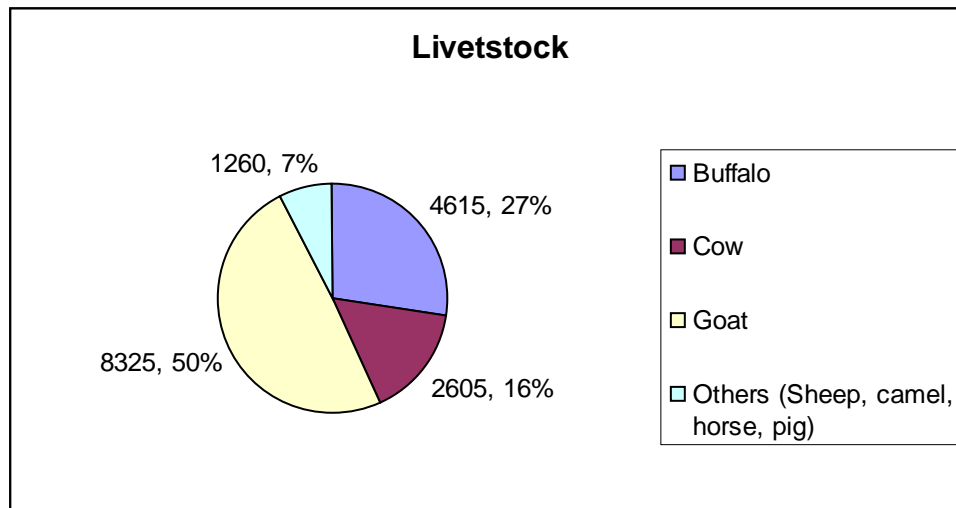
Nilgai, Wild Boar and Jackal are reported as crop damaging animals from every village.

d. Livestock

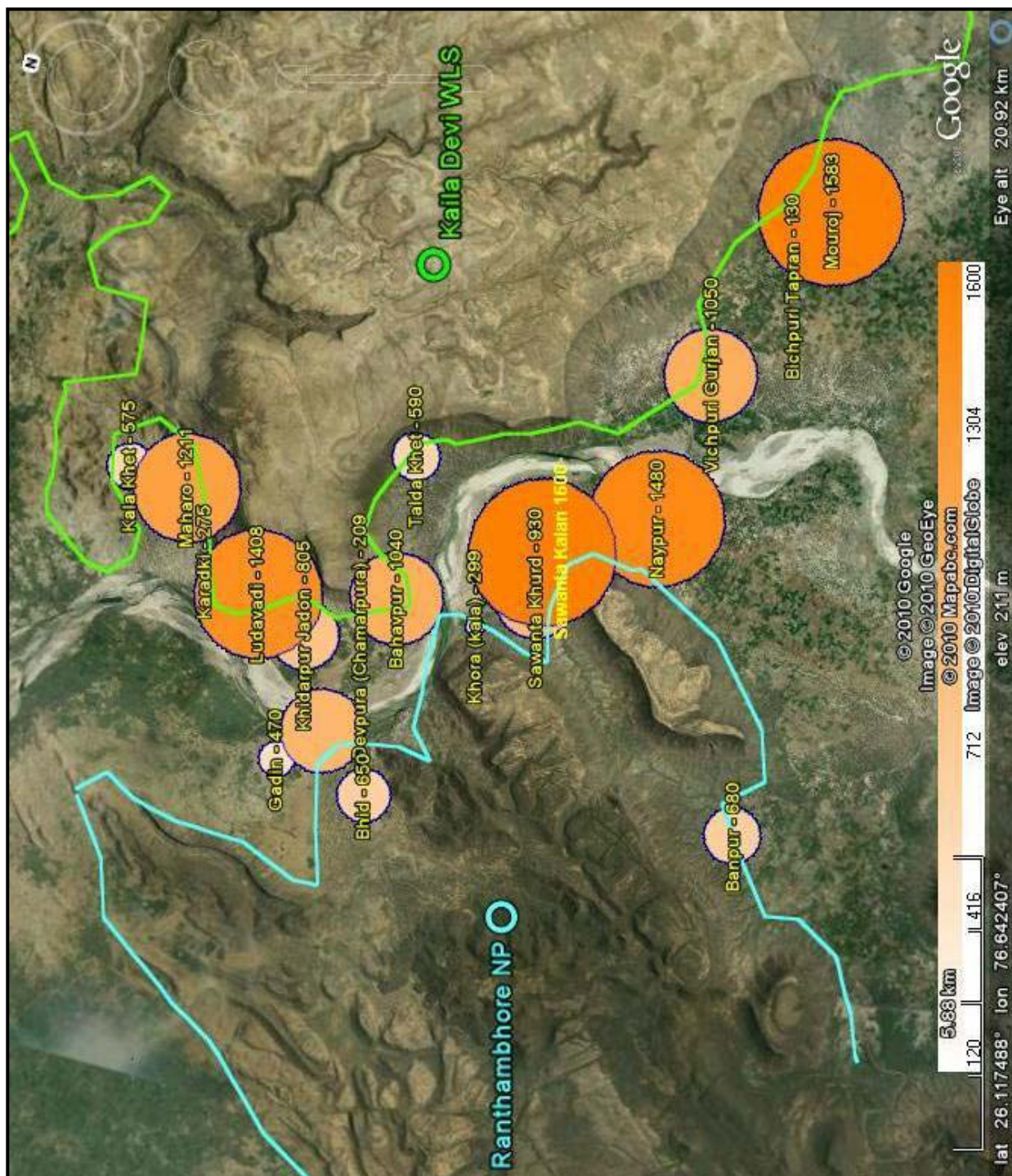
Livestock is the traditional income source of many people in this area. There are approximately 8325 goats and 7220 cows and buffaloes in this area. (Map) Other animals such as sheep and hoses add up to 1260. Goat is much preferred type of livestock which is about 50% of the total livestock. (Chart)

Livestock is predated by leopard, wolf, hyena, jackal and rarely by tigers in this area. Every year about 9-10 goats are killed on an average by these predators. Larger livestock such as Cows and Buffaloes are also killed.

Chart 2: Livestock Number & Composition



Map 7: Livestock Number & Distribution



e. Sand Mining

Banas River has undergone changes due to various developmental activities including dam which supplies water to Jaipur, agriculture and sand mining. The dry and shallow river bed of Banas is a magnet for sand miners. Large quantities of sand extracted from this area are transported to many places in Rajasthan and bordering states as well. This sand is used in construction and manufacture of concrete.

The main mining sites are situated near villages of Sawanta and Bhoori Pahadi. Transport of trucks and tractors laden with sand can be seen regularly.

Illegal and disruptive sand mining has been increasingly threatening to a variety of wildlife in India and other parts of the world. Sand is indivisible part of riparian and marine ecosystems. The removal of large quantities of sand from river bed changes the flow and eventually gives rise to erosion of river bank. It also affects wildlife such as the Gharial, turtles, fish and birds which are dependent on this system.

f. Infrastructural Development

Ranthambhore Tiger Reserve is intercepted by a number of roads including a state highway which separates Ranthambhore NP and Sawai Mansingh WLS. Banas needs to be crossed by animals as well as humans. People usually cross the dry river bed easily.

In 2009, 6.5 crore rupees road construction project was planned between Sawanta and Hadoti which also included two bridges to cross Banas.

Two different outcomes were expected about this road. Forest Department cleared this project to improve access to Kailadevi WLS. Whereas, some wildlife conservationists believed that the road will promote illegal mining activities and heavy traffic in the key wildlife corridor. Till then the construction had preceded using sand from the ravines of the same area. A campaign was also started by Sanctuary Asia against construction of road. In the end High Court gave a decision against the construction of road seeking wellbeing of wildlife.

Roads going through Protected Areas are infamous infrastructural barriers. It is essential to prevent any such projects in future to maintain wildlife movement through this area.



Image: Banas banks under construction for road



Image: Heavy machinery being used at the site



6. Wildlife

The wildlife occurring in this area was recorded by us based upon direct and indirect evidences. The direct evidences were sightings. All the sightings were opportunistic. The indirect evidences were based upon signs i.e. pugmarks, scat of the animals, and information provided by the villagers.

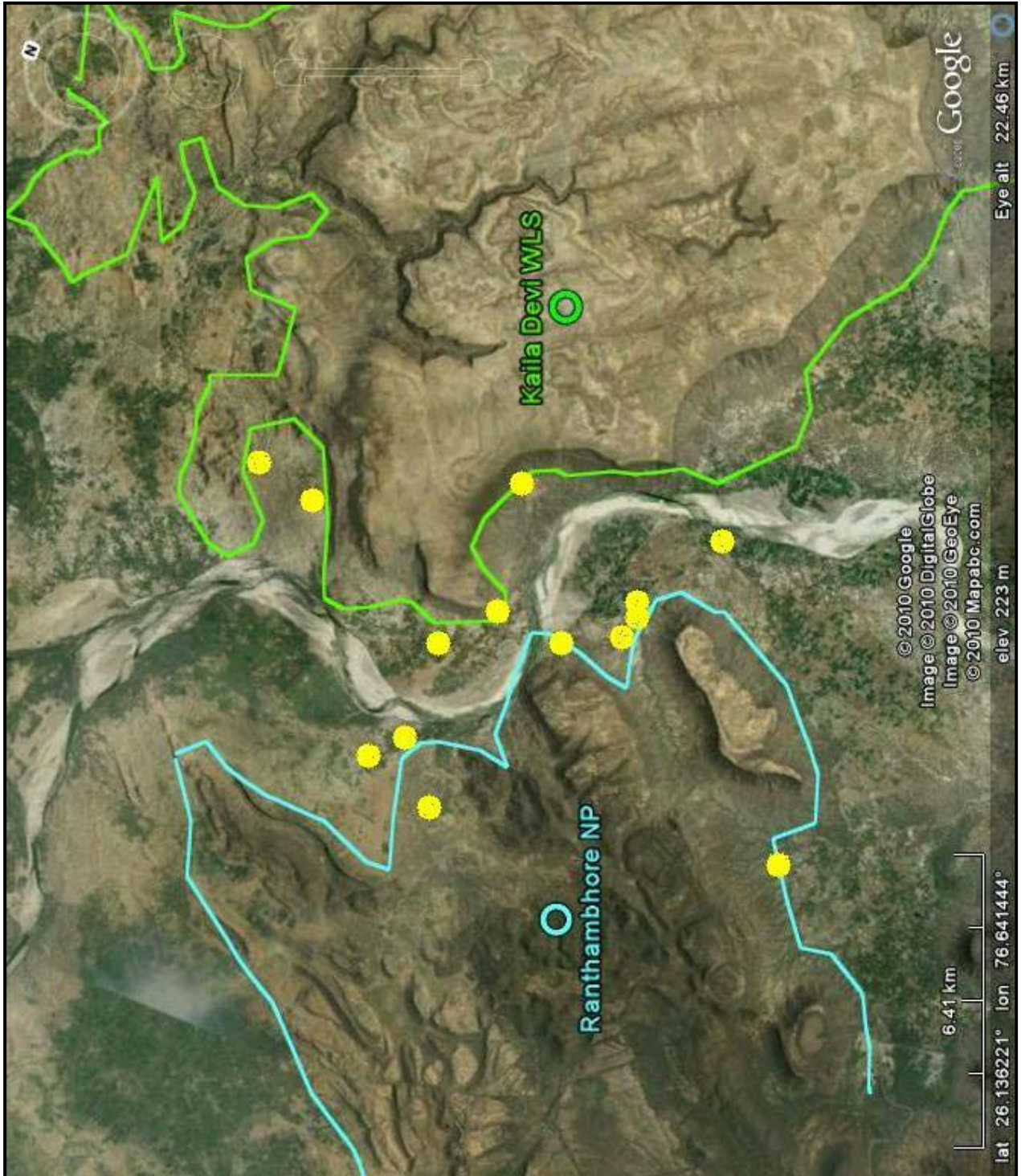
All of the villages in study area report presence have leopard, hyena, wolf and jackal as main predators (Map). 14 villages from the study area reported that their livestock is killed by tiger too (Map). Nilgai and Wild Boar are also reported from all the villages. One village, Banpur, also reports Spotted Deer as crop raider.

Banas river, its banks and ravines provide a unique habitat for many more animals including foxes, birds and reptiles.

List of villages which reported livestock depredation by tiger-

1. Banpur
2. Bahavpur
3. Talda Khet
4. Gadin
5. Maharo
6. Devpura (chamarpura)
7. Bhid
8. Talda
9. Khora (kala)
10. Sawanta khurd
11. Jogipura
12. Sawanta Kalan
13. Naypur
14. Kala Khet

Map 8: Tiger presence in the study area



7. Discussion & Recommendations

The corridor between Ranthambhore NP and Kailadevi WLS is vital for movement of tigers between the two protected areas. The natural barrier of river is easily crossable due to its shallow water and small girth. Nonetheless, there are villages and human activities in this corridor which can affect the movement of animals.

Designing a monitoring program especially for this corridor is crucial for the form a strategy for conservation of the area. With careful planning and design, wildlife corridors can help reduce the negative effects of habitat fragmentation by allowing dispersal of individuals between large patches of remaining habitat. While additional study on the efficacy of wildlife corridors is necessary, some general principles of evaluation and design are available and should be implemented. Monitoring the use of corridors by target wildlife species is an important step in corridor planning, to allow for adaptive management (Bond, M. 2003.).

Banas River is an integral part of the ecology of this area and should be included in the Protected Area. Agriculture on banks, flattening of ravines and sand mining are already impeding survival of wildlife in the area. Illegal mining should be prohibited rigorously.

The narrowest part of the corridor is of priority (Map). Housing or any developmental projects should not be allowed to hamper the movement of wildlife in this area.

The area needs to be evaluated and protected for better tiger movement and to lessen human-animal conflict.

Annexure 1

Socio-economic Datasheet

Details	Village Name
GPS Location	
State	
District	
Tehsil/Municipalities	
Village Revenue	
Village Electrified	
Water Supply	
Parliamentary Constituency	
Assembly Constituency	
Police Station	
Sarpanch	
Panchayat	
Population Details	
Total Population (Census 2001)	
Total Population (Survey Data)	
Male (2001)	
Female (2001)	
Density per sq km	
Literacy	
Illiteracy	
No. of Households	
Children < 6yrs	
Ethnic Group	
Gurjers	
Meenas	
Rajputs	
Moghyas	
Malis	
Bairwas	
Others	
Vehicles	
Jeeps	
Tractors	
Motorcycles	
Others	
Water Availability	
Irrigation	
Hand Pumps	
Banks	
Post Office	
Health Care Details	
Hospitals	
Beds	

Doctors	
Primary Health Centre	
Private Hospital	
Firewood Collection per Household in %	
from inside protected area	
from outside protected area	
Income Sources per Household in %	
Agriculture	
Livestock	
Forest Products	
Hunting/Fishing	
Employment (Govt. & other)	
Handicrafts	
Trading	
Other	
Education	
Schools (Govt = G, Pvt = P)	
Primary	
Secondary	
Middle	
Higher Secondary	
Rainfall & Temperature	
Avg Rainfall	
Underground Water Level	
Agricultural Use	
Wheat	
Mustard	
Pulses & Gram	
Other	
Land Ownership (% Households)	
Owned Land	
Rented Land	
Shared Common Land	
Landless	
Crop Predation	
Blue Bull	
Wild Pig	
Monkey	
Deer	
Jackal	
Other	
Livestock Number (Approximate)	
Buffalo	
Cow	
Goat	
Pigs	
Others	
Livestock Predation (Avg No. lost per year)	
Buffalo	
Cow	

Goat	
Pigs	
Others	
Predation By	
Tiger	
Leopard	
Wolf	
Jackal	
Hyena	
Poaching Data	
Communities Involved	
No. of Individuals Involved	
Animals Preferred For Poaching	
Techinques	
% of village Hhds by proportion of Income Derived from PA	
0-25 % of all Income	
26- 50 % of all Income	
50 – 75 % of all Income	
76 - 100 % of all Income	

Annexure 2

List of Villages in Ranthambhore NP-Kaila Devi WLS Corridor

1. Banpur
2. Piladanda
3. Mouroj
4. Kaladanda
5. bichpuri tapran
6. Vichpuri Gujran
7. Naypur
8. Sawanta Kalan
9. Jogipura
10. Sawanta khurd
11. Khora (Kala)
12. Talda Khet
13. Bahavpur
14. Devpura (chamarpura)
15. Khidarpur jadon
16. Ludavadi
17. Karadki
18. Maharo
19. Kala Khet
20. Gadin
21. Talda
22. Bhid

Annexure 3

Socio-economic data of villages in the study area

Village	Banpur	Mouroj	Kaladanda	Vichpuri Gujran
GPS Location	N26*04.002'	N26*04.676'	N26*05.129'	N26*05.524'
	E076*36.357'	E076*44.109'	E076*43.625'	E076*41.784'
	Eleavation-220m	Eleavation-227m	Eleavation-218m	Eleavation-215m
State				
District	Sawai Madhopur	Sawai Madhopur	Sawai Madhopur	Sawai Madhopur
Tehsil/Municipalities	Khandar	Khandar	Khandar	Khandar
Village Revenue	Yes	Yes	No	Yes
Village Electrified	No	Yes	Yes	Yes
Water Supply	Yes	Yes	Yes	Yes
Parliamentary Constituency	Namonarayan Meena	Namonarayan Meena	Namonarayan Meena	Namonarayan Meena
Assembly Constituency	Ashok Bairwa	Ashok Bairwa	Ashok Bairwa	Ashok Bairwa
Police Station	Khandar	Baihravnda Kalan	Baihravnda Kalan	Baihravnda Kalan
Sarpanch	Ramsukhi Bairwa	Kapoori Devi Gurjar	Kapoori Devi Gurjar	Kapoori Devi Gurjar
Panchayat	Goth Bihari	Vichpuri Gujran	Vichpuri Gujran	Vichpuri Gujran
Population Data				
Total Population (Census 2001)	52	1477		767
Total Population (Survey Data)	70	1400	400	900
Male (2001)	42 (39)	785 (748)	215	495 (429)
Female (2001)	28 (13)	615 (671)	185	405 (338)
Density per sq km				
Literacy				
Illiteracy				
No. of Households	14 (11)	245 (268)	50	165 (120)
Children < 6yrs				
Ethnic Groups				
Gurjers	Yes	Yes 48	No	Yes 70

Meenas	No	No	No	No
Rajputs	No	No	No	No
Moghyas	No	No	No	No
Malis	No	No	No	No
Bairwas	No	Yes 76	Yes	No
Others	No	Jat 60, Prajapat 38, Baniya 2,	No	Dhobi 4, Prajapat 25,
Vehicles		Brahmin 7, Nai 3, Harijan 3,		Brahmin 49, Khati 5,
Jeeps	0	0	0	3
Tractors	0	5	1	3
Motorcycles	0	15	20	10
Others	0	0	0	0
Basic Facilities				
Irrigation	Well, Tubewell,	Well, Tubewell,	Well, Tubewell,	Well, Tubewell,
Hand Pumps	1	7 (2 working)	5 (2 working)	6
Banks	no nearest Khandar	no nearest Baler	no nearest Baler	no nearest Baler
Post Office	Goth Bihari	Vichpuri Gujran	Vichpuri Gujran	Vichpuri Gujran
Health Care Details				
Hospitals	No, nearest Khandar	No, nearest Baler	No, nearest Khandar	no nearest Baler
Beds	0	0	0	0
Doctors	0	0	0	0
Primary Health Centre	0	0	0	0
Private Hospital	0	0	0	0
Firewood Collection				
from inside protected area	60	60	70	15
from outside protected area	40	40	30	85
Income Sources in %				
Agriculture	30	40	40	45
Livestock	40	20	20	20
Forest Products	10	10	10	5
Hunting/Fishing	0	0	5	0
Employment (Govt. & other)	0	2	1	5
Handicrafts	0	0	0	0
Trading	0	4	1	0
Other	Labour	Labour	Labour	Labour

Education				
Schools (Govt = G, Pvt = P)	No	G-1 , P- 1	G-1 ,	G 1
Primary	No	No	Yes	No
Secondary	No	No	No	No
Middle	No	Yes	No	Yes
Higher Secondary	No	No	No	No
Water				
Avg Rainfall				
Underground Water Level	300ft	400ft	350ft	250ft
Crops				
Wheat	30	30	30	35
Mustard	40	40	40	45
Pulses & Gram	10	10	10	10
Other	20 Chilli,Jowar, Bajra, Sesame	20,Chilli,Bajra, Jowar, Seasame,	30,Chilli ,Bajra,Jowar, Seasame,	10 Jowar, Bajra, Sesame
Land Ownership				
Owned Land	100	100	100	100
Rented Land	0	0	0	0
Shared Common Land	0	0	0	0
Landless	0	0	0	0
Crop Predation by				
Blue Bull	Yes	Yes	Yes	Yes
Wild Pig	Yes	Yes	Yes	Yes
Monkey	No	No	No	No
Deer	No	No	No	No
Jackal	No	Yes	Yes	No
Other	Chital	No	No	No
Livestock number (approx)				
Buffalo	100	300	150	350
Cow	120	200	20	150
Goat	460	1000	100	550
Pigs	0	50	0	0
Others	0	Hen 30, Horse 1, Camel 2,	0	0
Livestock Predation				
Buffalo	2	0	0	0
Cow	5	2	1	1
Goat	15	12	8	11
Pigs	0	0	0	0
Others	0	0	0	0

Livestock Predation by				
Tiger	Yes	No	No	No
Leopard	Yes	Yes	Yes	Yes
Wolf	Yes	Yes	Yes	Yes
Jackal	Yes	Yes	Yes	Yes
Hyena	Yes	Yes	Yes	Yes
Poaching				
Communities Involved	No	No	No	No
No. of Individuals Involved	No	No	No	No
Animals Preferred For Poaching	No	No	No	No
Techinques	No	No	No	No
Income derived from PA				
0-25 % of all Income	Yes	Yes	Yes	Yes
26- 50 % of all Income	no	no	no	no
50 – 75 % of all Income	No	No	No	No
76 - 100 % of all Income	No	No	No	No

Village	Piladanda	bichpuri tapran	Bahavpur	Talda Khet
GPS Location	N26*04.586'	N26*04.902'	N26*08.262'	N26*08.459'
	E076*43.554'	E076*43.079'	E076*38.135'	E076*39.886'
	Eleavation-554m	Elevation 216m	Elevation 216m	Elevation 228m
State				
District	Sawai Madhopur	Sawai Madhopur	Sawai Madhopur	Sawai Madhopur
Tehsil/Municipalities	Khandar	Khandar	Khandar	Khandar
Village Revenue	No	No	Yes	No
Village Electrified	Yes	Yes	No ,Solar Light	No
Water Supply	Yes	Yes	No	No
Parlimentary Constituency	Namonarayan Meena	Namonarayan Meena	Namonarayan Meena	Namonarayan Meena
Assembly Constituency	Ashok Bairwa	Ashok Bairwa	Ashok Bairwa	Ashok Bairwa
Police Station	Baihrawnda Kalan	Baihrawnda Kalan	Baihrawnda Kalan	Baihrawnda Kalan
Sarpanch Panchayat	Kapoori Devi Gurjar Vichpuri Gujran	Kapoori Devi Gurjar Vichpuri Gujran	Badam Devi Meena Dongri	Badam Devi Meena Dongri
Population Data				
Total Population (Census 2001)			453	
Total Population (Survey Data)	225	300	550	35
Male (2001)	145	165	295 (251)	20
Female (2001)	80	135	255 (202)	15
Density per sq km				
Literacy				
Illiteracy				
No. of Households	30	45	86 (95)	5
Children < 6yrs				
Ethnic Groups				
Gurjers	No	No	Yes	Yes
Meenas	No	No	No	No
Rajputs	No	No	No	No
Moghyas	No	No	No	No
Malis	No	No	No	No
Bairwas	Yes	Yes	No	No
Others	No	No	Brahmin , Keer,	No
Vehicles				
Jeeps	0	0	0	0

Tractors	0	0	4	0
Motorcycles	4	7	8	0
Others	0	0	0	0
Basic Facilities				
Irrigation	Well, Tubewell,	Well, Tubewell,	Well	Well
Hand Pumps	3	2	0	0
Banks	no nearest Baler	no nearest Baler	No nearest Khandr	No nearest Khandr
Post Office	Vichpuri Gujran	Vichpuri Gujran	Dongri	Dongri
Health Care Details				
Hospitals	no nearest Baler	no nearest Baler	No nearest Khandr	No nearest Khandr
Beds	0	0	0	0
Doctors	0	0	0	0
Primary Health Centre	0	0	0	0
Private Hospital	0	0	0	0
Firewood Collection				
from inside protected area	50	55	60	70
from outside protected area	50	45	40	30
Income Sources in %				
Agriculture	40	40	40	35
Livestock	20	20	30	35
Forest Products	10	10	5	5
Hunting/Fishing	0	0	0	0
Employment (Govt. & other)	1	1	1	0
Handicrafts	0	0	0	0
Trading	0	2	0	0
Other	Labour	Labour	Labour	Labour
Education				
Schools (Govt = G, Pvt = P)	No	G-1	G (1)	No
Primary	No	yes	No	No
Secondary	No	No	No	No
Middle	No	No	Yes	No
Higher Secondary	No	No	No	No
Water				
Avg Rainfall				
Underground Water Level	350ft	325ft	65ft	70ft
Crops				
Wheat	35	30	30	35
Mustard	40	40	30	30

Pulses & Gram	10	10	0	0
Other	15.Chilli,Jowar, Bajra, Sesame	15.Chilli,Jowar, Bajra, Sesame	40 Bajra, Sesame,Jowar,	35 Bajra, Sesame,Jowar,
Land Ownership			Vegetables,	Vegetables,
Owned Land	100	100	100	100
Rented Land	0	0	0	0
Shared Common Land	0	0	0	0
Landless	0	0	0	0
Crop Predation by				
Blue Bull	Yes	Yes	Yes	Yes
Wild Pig	Yes	Yes	Yes	Yes
Monkey	No	No	No	No
Deer	No	No	No	No
Jackal	No	No	Yes	Yes
Other	No	No	No	No
Livestock number (approx)				
Buffalo	50	50	175	40
Cow	20	20	500	50
Goat	50	60	360	500
Pigs	0	0	0	0
Others	0	0	Camel- 5,	0
Livestock Predation				
Buffalo	0	0	1	1
Cow	0	0	3	2
Goat	4	3	12	10
Pigs	0	0	0	0
Others	0	0	0	0
Livestock Predation by				
Tiger	No	No	Yes	Yes
Leopard	Yes	Yes	Yes	Yes
Wolf	Yes	Yes	Yes	Yes
Jackal	Yes	Yes	Yes	Yes
Hyena	Yes	Yes	Yes	Yes
Poaching				
Communities Involved	No	No	No	No
No. of Individuals Involved	No	No	No	No
Animals Preferred For Poaching	No	No	No	No
Techniques	No	No	No	No

Income derived from PA				
0-25 % of all Income	Yes	Yes	Yes	Yes
26- 50 % of all Income	no	no	no	no
50 – 75 % of all Income	No	No	No	No
76 - 100 % of all Income	No	No	No	No

Village	Ludavadi	Gadin	Karadki	Maharo
GPS Location	N26*09.761,	N26*09.102	N26*10.420,	N26*10.817,
	E076*37.749'	E076*35.843'	E076*37.976'	E076*38.803'
	Elevation 230 m	Elevation 235m	Elevation 222 m	Elevation 231 m
State				
District	Sawai Madhopur	Sawai Madhopur	Sawai Madhopur	Sawai Madhopur
Tehsil/Municipalities	Khandar	Khandar	Khandar	Khandar
Village Revenue	No	No	Yes	Yes
Village Electrified	No	Solar Light	No	Solar Light
Water Supply	Yes	Yes	Yes	Yes
Parliamentary Constituency	Namonarayan Meena	Namonarayan Meena	Namonarayan Meena	Namonarayan Meena
Assembly Constituency	Ashok Bairwa	Ashok Bairwa	Ashok Bairwa	Ashok Bairwa
Police Station	Malarna station	Khandar	Malarna station	Malarna station
Sarpanch	Ganga sahaya Meena	Badam Devi Meena	Ganga sahaya Meena	Ganga sahaya Meena
Panchayat	Dongri	Dongri	Dongri	Dongri
Population Data				
Total Population (Census 2001)				
Total Population (Survey Data)	385	175	125	295
Male (2001)	210	90	70	165
Female (2001)	175	85	55	130
Density per sq km				
Literacy				
Illiteracy				
No. of Households	55	22	17	45
Children < 6yrs				
Ethnic Groups				
Gurjers	Yes	Yes	Yes	Yes
Meenas	No	No	No	No
Rajputs	No	No	No	No
Moghyas	No	No	No	No

Malis	No	No	No	No
Bairwas	No	No	No	No
Others	No	No	No	No
Vehicles				
Jeeps	0	0	0	0
Tractors	1	0	0	2
Motorcycles	1	1	0	3
Others	0	0	0	0
Basic Facilities				
Irrigation	Well,	well,	Well,	Well,
Hand Pumps	0	0	0	0
Banks	No nearest Sawai Madhopur	No nearest Khandar	No nearest Sawai Madhopur	Shyampura
Post Office	Dongri	Dongri	Dongri	Dongri
Health Care Details				
Hospitals	No nearest Sawai Madhopur	No nearest Khandar	No nearest Sawai Madhopur	No nearest Sawai Madhopur
Beds	0	0	0	0
Doctors	0	0	0	0
Primary Health Centre	0	0	0	0
Private Hospital	0	0	0	0
Firewood Collection				
from inside protected area	65	70	65	70
from outside protected area	35	30	35	30
Income Sources in %				
Agriculture	30	30	35	25
Livestock	30	40	35	30
Forest Products	5	5	10	5
Hunting/Fishin g	0	0	0	0
Employment (Govt. & other)	2	0	0	0
Handicrafts	0	0	0	0
Trading	0	0	0	0
Other	Labour	Labour	Labour	Labour
Education				
Schools (Govt = G, Pvt = P)	G-1	G-1	G-1	G-1
Primary	No	Yes	No	No
Secondary	No	No	No	No

Middle	Yes	No	Yes	Yes
Higher Secondary	No	No	No	No
Water				
Avg Rainfall				
Underground Water Level	115ft	60	50ft	70ft
Crops				
Wheat	35	30	25	30
Mustard	40	40	30	35
Pulses & Gram	10	10	0	0
Other	15 Bajra, Sesame, Jowar, Gawar	20 Bajra, Sesame, Jowar,	45 Bajra, Sesame, Jowar, Gawar	35 Bajra, Sesame, Jowar, Gawar
Land Ownership				
Owned Land	100	100	100	100
Rented Land	0	0	0	0
Shared Common Land	0	0	0	0
Landless	0	0	0	0
Crop Predation by				
Blue Bull	Yes	Yes	Yes	Yes
Wild Pig	Yes	Yes	Yes	Yes
Monkey	No	No	No	No
Deer	No	No	No	No
Jackal	Yes	Yes	Yes	Yes
Other	No	No	No	No
Livestock number (approx)				
Buffalo	200	150	50	600
Cow	100	20	50	300
Goat	1000	250	170	300
Pigs	0	0	0	0
Others	Sheep-100, Camel-8,	Sheep- 50	Horse-2, Camel- 3,	Horse-2, Camel- 9,
Livestock Predation				
Buffalo	0	1	0	0
Cow	0	2	1	1
Goat	10	10	8	8
Pigs	0	0	0	0
Others	0	Sheep- 2	0	0
Livestock Predation by				
Tiger	No	Yes	No	Yes
Leopard	Yes	Yes	Yes	Yes
Wolf	Yes	Yes	Yes	Yes

Jackal	Yes	Yes	Yes	Yes
Hyena	Yes	Yes	Yes	Yes
Poaching				
Communities Involved	No	No	No	No
No. of Individuals Involved	No	No	No	No
Animals Preferred For Poaching	No	No	No	No
Techniques	No	No	No	No
Income derived from PA				
0-25 % of all Income	Yes	Yes	Yes	Yes
26- 50 % of all Income	No	no	No	No
50 – 75 % of all Income	No	No	No	No
76 - 100 % of all Income	No	No	No	No

Village	Devpura (chamarpura)	Khidarpur jadon	Bhid	Talda
GPS Location	N26*08.549'	N26*09.149'	N26*08.049	N26*08.693,
	E076*37.571'	E076*37.408'	E076*35.559'	E076*36.327'
	Elevation 211m	Elevation 221m	Elevation 216m	Elevation 222m
State				
District	Sawai Madhopur	Sawai Madhopur	Sawai Madhopur	Sawai Madhopur
Tehsil/Municipalities	Khandar	Khandar	Khandar	Khandar
Village Revenue	Yes	Yes	Yes	Yes
Village Electrified	No	Solar Plant	Solar Light	Yes
Water Supply	Yes	Yes	Yes	Yes
Parliamentary Constituency	Namonarayan Meena	Namonarayan Meena	Namonarayan Meena	Namonarayan Meena
Assembly Constituency	Ashok Bairwa	Ashok Bairwa	Ashok Bairwa	Ashok Bairwa
Police Station	Khandar	Malarna Dongar	Khandar	Khandar
Sarpanch	Badam Devi Meena	Badam Devi Meena	Badam Devi Meena	Badam Devi Meena
Panchayat	Dongri	Dongri	Dongri	Dongri
Population Data				
Total Population (Census 2001)		1218	337	671
Total Population (Survey Data)	250	1253	405	700
Male (2001)	135	405 (701)	225 (188)	415 (327)
Female (2001)	115	530 (517)	180 (151)	385 (299)
Density per sq km				
Literacy				
Illiteracy				
No. of Households	25	235 (229)	80 (69)	139 (133)
Children < 6yrs				
Ethnic Groups				
Gurjers	Yes	Yes	Yes	Yes
Meenas	No	No	No	No
Rajputs	No	No	No	No
Moghyas	No	No	No	No
Malis	No	No	Yes	No
Bairwas	No	Yes	Yes	No
Others	No	Brahmin, Nai, Teli,	Brahmin, Nai,	Brahmin, Nai, Prajapat, Baniya
Vehicles				
Jeeps	0	0	0	0

Tractors	3	5	3	2
Motorcycles	1	8	9	7
Others	0	0	0	0
Basic Facilities				
Irrigation	Well	Well	Well	Well
Hand Pumps	0	0	2	6
Banks	No nearest Khandr	No nearest Khandr	No nearest Khandr	No nearest Khandr
Post Office	Dongri	Dongri	Dongri	Dongri
Health Care Details				
Hospitals	No nearest Khandr	No nearest Khandr	No nearest Khandr	No nearest Khandr
Beds	0	0	0	0
Doctors	0	0	0	0
Primary Health Centre	0	0	0	0
Private Hospital	0	0	0	0
Firewood Collection				
from inside protected area	60	65	70	50
from outside protected area	40	35	30	30
Income Sources in %				
Agriculture	40	40	32	30
Livestock	25	30	35	30
Forest Products	10	10	10	10
Hunting/Fishing	0	0	0	0
Employment (Govt. & other)	0	11	2	4
Handicrafts	0	0	0	0
Trading	0	0	0	0
Other	Labour	Labour	Labour	Labour
Education				
Schools (Govt = G, Pvt = P)	G (1)	G (1)	G (1)	G (1)
Primary	Yes	No	Yes	No
Secondary	No	Yes	No	No
Middle	No	No	No	Yes
Higher Secondary	No	No	No	No
Water				
Avg Rainfall				
Underground Water Level	50ft	80ft	60ft	70ft
Crops				
Wheat	35	30	30	30
Mustard	30	35	40	30
Pulses & Gram	0	0	0	0
Other	35 Bajra,	35 Bajra,	35 Bajra,	40 Bajra,

	Sesame, Jowar,	Sesame, Jowar,	Sesame, Jowar,	Sesame, Jowar,
Land Ownership	Vegetables,			Vegetables,
Owned Land	100	100	100	100
Rented Land	0	0	0	0
Shared Common Land	0	0	0	0
Landless	0	0	0	0
Crop Predation by				
Blue Bull	Yes	Yes	Yes	Yes
Wild Pig	Yes	Yes	Yes	Yes
Monkey	No	No	No	No
Deer	No	No	No	No
Jackal	Yes	Yes	Yes	Yes
Other	No	No	No	No
Livestock number (approx)				
Buffalo	70	350	300	350
Cow	30	150	150	250
Goat	105	300	200	350
Pigs	0	0	0	0
Others	camel-4	camel-5	0	Camel-5
Livestock Predation				
Buffalo	0	0	2	1
Cow	2	2	3	2
Goat	10	7	15	10
Pigs	0	0	0	0
Others	0	0	0	0
Livestock Predation by				
Tiger	Yes	No	Yes	Yes
Leopard	Yes	Yes	Yes	Yes
Wolf	Yes	Yes	Yes	Yes
Jackal	Yes	Yes	Yes	Yes
Hyena	Yes	Yes	Yes	Yes
Poaching				
Communities Involved	No	No	No	No
No. of Individuals Involved	No	No	No	No
Animals Preferred For Poaching	No	No	No	No
Techniques	No	No	No	No
Income derived from PA				
0-25 % of all Income	Yes	Yes	Yes	Yes
26- 50 % of all Income	no	no	no	no

50 – 75 % of all Income	No	No	No	No
76 - 100 % of all Income	No	No	No	No

Village	Khora (kala)	Sawanta khurd	Jogipura	Sawanta Kalan	Naypur	Kala Khet
GPS Location	N26*07.352,	N26*06.781,	N26*06.731,	N26*06.840,	N26*05.700,	N26*11.482,
	E076*38.040'	E076*38.578'	E076*38.907'	E076*39.137'	E076*39.901'	E076*38.877'
	Elevation 210m	Elevation 230 m	Elevation 202 m	Elevation 237 m	Elevation 220 m	Elevation 227 m
State						
District	Sawai Madhopur	Sawai Madhopur	Sawai Madhopur	Sawai Madhopur	Sawai Madhopur	Karauli
Tehsil/Municipalities	Khandar	Khandar	Khandar	Khandar	Khandar	sapotara
Village Revenue	No	No	No	Yes	Yes	Yes
Village Electrified	No	No	No	Yes	Yes	No
Water Supply	Yes	Yes	Yes	Yes	Yes	Yes
Parliamentary Constituency	Namona rayan Meena	Namona rayan Meena	Namonara yan Meena	Namonara yan Meena	Namonara yan Meena	Khiladi Bairwa
Assembly Constituency	Ashok Bairwa	Ashok Bairwa	Ashok Bairwa	Ashok Bairwa	Ashok Bairwa	Ramesh Chand Meena
Police Station	Khandar	Khandar	Khandar	Khandar	Khandar	Malarna station
Sarpanch	Badam Devi Meena	Kapoori Devi	Kastoori Devi	Kastoori Devi	Kastoori devi gurjar	Kirtan Chand Rajput
Panchayat	Dongri	Nayaipur	Nayaipur	Nayaipur	Naypur	Bagida
Population Data						
Total Population (Census 2001)					1165	
Total Population (Survey Data)	150	650	255	1050	1325	110
Male (2001)	95	378	135	585	725 (613)	60
Female (2001)	55	280	120	465	602 (533)	50
Density per sq km						
Literacy						
Illiteracy						

No. of Households	65	70	35	175	240 (225)	15
Children < 6yrs						
Ethnic Groups						
Gurjers	Yes	Yes	Yes	Yes	Yes	Yes
Meenas	No	No	No	No	No	No
Rajputs	No	No	No	No	No	No
Moghyas	No	No	No	No	No	No
Malis	No	No	No	No	No	No
Bairwas	No	No	No	Yes	Yes	No
Others	No	Nath,	Nath,	Brahmin, Baniya, Prajapat, Nai,	Nath, baniya, Brahmin, Prajapat	No
Vehicles						
Jeeps	0	0	0	0	0	0
Tractors	0	0	1	5	5	0
Motorcycles	2	1	1	7	15	0
Others	0	0	0	0	0	0
Basic Facilities						
Irrigation	Well	Well,	Well,	Well,	Well,	Well,
Hand Pumps	1	3	2	7 (5 running)	5	0
Banks	No nearest Khandr	No nearest Khandar	No nearest Khandar	No nearest Khandar	Khandar	Hadoti
Post Office	Dongri	Nayaipur	Nayaipur	Nayaipur	Naypur	Fatehpur
Health Care Details						
Hospitals	No nearest Khandr	No nearest Khandar	No nearest Khandar	No nearest Khandar	No nearest Khandar	No nearest Hadoti
Beds	0	0	0	0	0	0
Doctors	0	0	0	0	0	0
Primary Health Centre	0	0	0	0	0	0
Private Hospital	0	0	0	0	0	0
Firewood Collection						
from inside protected area	50	60	50	60	50	70

from outside protected area	50	40	50	40	50	30
Income Sources in %						
Agriculture	30	40	40	45	35	30
Livestock	35	20	25	25	20	35
Forest Products	5	10	5	5	5	10
Hunting/Fishing	0	0	0	0	0	0
Employment (Govt. & other)	0	0	1	2	0	0
Handicrafts	0	0	0	0	0	0
Trading	0	0	0	2	0	0
Other	Labour	Labour	Labour	Labour	Labour	Labour
Education						
Schools (Govt = G, Pvt = P)	No	G-1	G-1	G-1	G-1	
Primary	No	Yes	Yes	No	No	No
Secondary	No	No	No	Yes	No	No
Middle	No	No	No	No	Yes	No
Higher Secondary	No	No	No	No	No	No
Water						
Avg Rainfall						
Underground Water Level	50ft	40ft	50ft	50ft	100ft	200ft
Crops						
Wheat	25	30	35	30	30	25
Mustard	30	40	40	35	35	35
Pulses & Gram	5	10	10	0	0	10
Other	40 Bajra, Sesame, Jowar,	20 Bajra, Sesame, Jowar,	15 Bajra, Sesame, Jowar, Chilli	35 Bajra, Sesame, Jowar, Chilli	35 Bajra, Sesame, Jowar, Gawar	30 Bajra, Sesame, Jowar,
Land Ownership	Vegetables,				Chilli,	
Owned Land	100	100	100	100	100	100
Rented Land	0	0	0	0	0	0

Shared Common Land	0	0	0	0	0	0
Landless	0	0	0	0	0	0
Crop Predation by						
Blue Bull	Yes	Yes	Yes	Yes	Yes	Yes
Wild Pig	Yes	Yes	Yes	Yes	Yes	Yes
Monkey	No	No	No	No	No	No
Deer	No	No	No	No	No	No
Jackal	Yes	Yes	Yes	Yes	Yes	Yes
Other	No	No	No	No	No	No
Livestock number (approx)						
Buffalo	45	125	25	450	630	125
Cow	25	30	20	225	125	100
Goat	225	450	500	675	720	250
Pigs	0	0	0	0	0	0
Others	Camel-4	Sheep-325	Sheep-300	Sheep-250	Camel- 5,	Sheep 100
Livestock Predation						
Buffalo	1	1	1	1	0	0
Cow	2	2	1	1	1	1
Goat	7	12	11	9	10	10
Pigs	0	0	0	0	0	0
Others	0	Sheep-5	Sheep- 5	Sheep- 3	0	0
Livestock Predation by						
Tiger	Yes	Yes	Yes	Yes	Yes	Yes
Leopard	Yes	Yes	Yes	Yes	Yes	Yes
Wolf	Yes	Yes	Yes	Yes	Yes	Yes
Jackal	Yes	Yes	Yes	Yes	Yes	Yes
Hyena	Yes	Yes	Yes	Yes	Yes	Yes
Poaching						
Communities Involved	No	No	No	No	No	No
No. of Individuals Involved	No	No	No	No	No	No
Animals Preferred For Poaching	No	No	No	No	No	No
Technique	No	No	No	No	No	No

S						
Income derived from PA						
0-25 % of all Income	Yes	Yes	Yes	Yes	Yes	Yes
26- 50 % of all Income	no	No	No	No	No	No
50 – 75 % of all Income	No	No	No	No	No	No
76 - 100 % of all Income	No	No	No	No	No	No

References

1. Beier, P. and S. Loe. 1992. A checklist for evaluating impacts to wildlife movement corridors. *Wildlife, Society Bulletin* 20: 434-440.
2. Bond Monica 2003, *Principles of Wildlife Corridor Design*, Center for Biological Diversity, <http://www.biologicaldiversity.org/publications/papers/wild-corridors.pdf>
3. Dinerstein, E., Wikramanayake, E., Robinson, J., Karanth U., Rabinowitz, A., Olson, D., Mathew, T., Hedai, P., Connor, M., Hemley, G. & Bolze, D., 1997, *A Framework for Identifying High Priority Areas and Actions for the Conservation of Tigers in the Wild. Part I*. Washington DC, World Wildlife Fund-US and Wildlife Conservation Society.
4. Jhala Y. V., Gopal R., Qureshi Q. (2007). Status of the Tigers and Co-predators in Central Indian Landscape A Preliminary Report, National Tiger Conservation Authority,, http://scstsenvis.nic.in/poaching/status_tiger_central_india.pdf
5. Kenney, JS, Smith, JLD, Starfield, AM, McDougal, CW, 1995, The long-term effects of tiger poaching on population viability, *The Journal of the Society for Conservation Biology*, 9:5, pp. 1127-1133.
6. Meffe G. K., Carroll C. R. 1994, *Principles of conservation biology*, Sunderland, Mass. : Sinauer Associates
7. Ranthambhore Management Plan, 1991-1995, Govt. of Rajasthan, Forest Dept, pp 9-11
8. Rodgers, W. A. and H. S..Panwar. 1988. Planning wildlife protected areas network in India. Dept of Environment, Forests, and Wildlife/Wildlife Institute of India report, Wildlife Institute of India.
9. Rosenberg Daniel, Noon B. R. and Meslow E. C. 1997, *Biological Corridors: Form, Function, and Efficacy*, *BioScience*, Vol. 47, No. 10, AIBS: The First 50 Years, pp. 677-687
10. Schweiger, E. W., J. E. Diffendorfer, R. D. Holt, R. Pierotti, and M. S. Gaines 2000, The interaction of habitat fragmentation, plant, and small mammal succession in an old field. *Ecological Monographs* 70: 383-400.
11. TNN (Times News Network), Times of India, Anindo Dey March 8, 2010, <http://timesofindia.indiatimes.com/india/Locals-poison-2-tiger-cubs-in-Ranthambore/articleshow/5656064.cms>
12. Water Resources Department, Government of Rajasthan, <http://waterresources.rajasthan.gov.in/3bbanas.htm>

Author Profiles

Ovee Thorat (ovthorat@gmail.com)

Ovee started with an Internship at Mumbai based organization SPROUTS (Society for Promotion of Research, Outdoors, Urbanity, Training and Social Welfare) in 2007. She also surveyed Songhar; a sacred grove in Maharashtra with SPROUTS. Later on she worked as an Educator & Research Associate. She and other members of SPROUTS received a fellowship under PUKAR's (Partners for Urban Knowledge, Action and Research) Youth Fellowship Programme for documentation and popularization of urban biodiversity. As a result



of SPROUTS and Tiger Watch's Wildlife Conservation Course she was introduced to the work done by Tiger Watch. She volunteered for Project Waghoba in 2010 where she did mark-recapture studies of stray dog population in the village of Akole, Maharashtra. Along with this she also helped set the camera traps and track radio-collared leopards. Zoology as specialization at bachelor's level and Zoology with Animal Physiology at Master's level introduced Ovee to various facets of ecology. As she started understanding the subject she became more interested in various aspects of human-nature relationship.

Ramjilal Gurjer

Ramjilal Gurjer has done his graduation in Arts. He is a field expert and knows the area in and around Ranthambhore National Park very well. Ramji works as a home guard. The government recruits him six months in a year as forest guard. He spends the remaining six months working for Tiger Watch on various projects. His understanding of local communities, languages and problems at grass-root level has proved useful in every project that he has been a part of. In 2009 Ovee and Ramjilal Gurjer worked with other Tiger Watch team members for a research project aimed at assessing corridor viability between Ranthambhore National Park and Ramgarh Bishdhari Wildlife Sanctuary.